

**PLYMOUTH CHURCH  
UNITED CHURCH OF CHRIST  
December 20, 2009**

*No matter who you are  
or where you are on life's journey,  
you are welcome here  
to discover meaning in life  
to grow in relationship with God  
and to serve neighbors near and far.*

---

*The \* indicates when the congregation stands during worship. Our scripture reader is Michael Jorn. Our prayers come from "Touch Holiness." The poinsettias and Christmas decorations come from Plymouth friends and members. (We are still taking in forms today, if you have one) Also the Worship Arts Committee is seeking blue Christmas decorations, if you would like to bring an ornament for the tree.*

**OPENING OURSELVES TO GOD**

**PRELUDE**     *Pastorale*     Domenico Zipoli

**INTROIT**     *O Come, Immanuel*     Derric Johnson

**LIGHTING THE ADVENT CANDLE: JOY**

**LEADER**

Soon we shall celebrate the birth of Jesus. We worship God with joy in our hearts as we are reminded of the words the angel said on that first Christmas Day: "Behold, I bring you good news of a great joy which will come to all the people."

**CONGREGATIONAL RESPONSE: #116 v. 6**

**O Come, O Dayspring, come and cheer  
our spirits by your advent here;**

**Love stirs within the womb of night,  
and death's own shadows put to flight.**

**Rejoice, Rejoice! Emmanuel, shall come to you, O Israel!**

## **LEADER**

We light this candle to proclaim the coming of the light of God into the world. With the coming of this light there is joy, joy that is ours not only at Christmas but always.

**ALL: O Holy One, as Christmas draws near,  
there is a sense of excitement in the air.**

**We can feel a joy in our lives and see it in those around us.**

**Still, for some of us this is a sad time because of unhappy things that have happened in our lives.**

**Help us to have the joy that does not depend on earthly happiness but on you. Help us to be filled with your joy so that we may share it with a joyless world.**

**Alleluia and Amen.**

**\*HYMN #107** "Awake, Awake and Greet the New Morn"  
*(sing verses 1,3, & 4)*

## **\*PRAYER OF CONFESSION**

**We sing, "O Come All Ye Faithful," God,  
but we confess that we are not always faithful.**

**We could have shown love this past week,  
but we kept ourselves busy with other things.**

**We spoke without thinking and hurt someone.**

**We treated the gifts and greetings and meals as chores,  
leaving out the most important ingredient – caring.**

**We are sorry. Please forgive us, and accept our worship.**

**Amid the bright colors that surround us this season –  
the red, the green, the gold – send the light of your Christ,  
that all that is good may be revealed more clearly  
and all that is wrong may be exposed and changed.**

**Alleluia and Amen.**

## **ASSURANCE OF PARDON**

**GLORIA #125** *refrain only* "Angels We Have Heard on High"

## HEARING GOD'S WORD

**SCRIPTURE READING** Luke 1: 26-55

**ANTHEM** *The Dance of Promise* Lloyd Pfautsch  
from "A Day for Dancing"

Sarah Rohe, flute; Jim Skaleski, clarinet; Sachin Chheda, percussion

### TIME FOR CHILDREN

*Children are always welcome to remain in service with their parents.  
Other options are (ages are flexible, based on each child's need):*

--the nursery is open for any children ages 3 and under.

--the Salamander room (parents babysitting co-op room) is open  
for children from ages 3 through first grades.

-Children's Worship in Graham Chapel, for those in grades 2-6.

**HYMN** "Magnificat" (on back of bulletin)

**SERMON** "Singing Like Mary" Andrew Warner

### RESPONDING TO THE WORD

**CALL TO PRAYER** "Stay with Me" Taize

Stay with me, re - main here with me, watch and

pray. Watch and pray.

Jacques Berthier, Text & music © 1984 Taize Community, All rights reserved.

Used by permission, admin GIA Publ. licensed by OneLicense.net, #A-703597.

## PRAYERS OF THE COMMUNITY

### LORD'S PRAYER

**Our Father, who art in heaven, hallowed be thy name.**

**Thy kingdom come, thy will be done.**

**On earth as it is in heaven.**

**Give us this day our daily bread.**

**And forgive us our debts, as we forgive our debtors.**

**And lead us not into temptation,**

**But deliver us from evil.**

**For thine is the kingdom, and the power,  
and the glory, for ever. Amen.**

**OFFERTORY**     *O Thou that Tellest Good Tidings to Zion*  
from "Messiah", Lia Gima, alto  
G.F. Handel (1685-1759)

### \*DOXOLOGY

**Praise God from whom all blessings flow.**

**Praise God all creatures high and low.**

**Praise God in Jesus fully known:**

**Creator, Word, and Spirit, One. Amen.**

### \*PRAYER OF DEDICATION

**We dedicate our lives and all that we have  
to the work of life, of love, of peace.**

**Receive our gifts and lead us in wisdom and courage.**

**Alleluia, and Amen.**

## CONCERNS OF OUR COMMON LIFE

\*HYMN #122     "Come, O Long Expected Jesus"

### \*BENEDICTION

**POSTLUDE**     *Lift Up Your Heads, Ye Mighty Gates*  
arr. Richard Hudson (b. 1924)

---

## **Today After Worship:**

All are invited to enjoy coffee, tea and fellowship downstairs in the dining room.

## **In Education Hour:**

--Today: Pageant Rehearsal for Children – All who are in the Children's Christmas Pageant on Christmas Eve should take part and get their costumes.

--Micah Core Team will NOT meet today, the next meeting is Jan. 17.

--12/27: A Celebration of Ingrid Pierson's Music Ministry.

All ages welcome! No Sunday School classes this Sunday.

## **THANKS FROM THE BOYS & GIRLS CLUB:**

Staff came to Plymouth this past Thursday to pick up the 80 gifts from Plymouth members and friends. They were very glad to get all these wonderful presents for their kids, and send a big thank you to all who participated.

## **NEW LIBRARY BOOK**

*An Altar in the World: A Geography of Faith*, by Barbara Brown Taylor—Full of down-to-earth personal stories, in her lucid style Taylor helps us be charmed by the sacred in our everyday lives. Consider these chapters, for instance: The Practice of Paying Attention...of Walking on the Earth...of Getting Lost...of Saying No. Look for it on display in the niche or in the Inspiration/Devotional/Spirituality section of our Library. Check it out, following the posted procedure.

## **Upcoming Worship Services:**

Thursday Dec 24 4 pm Children's Christmas Service

Thursday Dec 24 11 pm Christmas Candlelight Vigil Service

Sunday Dec 27 9:30 am Worship, Andrew Preaching

Sunday January 3 Daniel Ross-Jones will be preaching at worship

Wed. January 6 A Celebration of Epiphany

-5:30 pm Potluck Supper for all

-6:45 pm Epiphany Service

# Plymouth Church

## Source of Funds vs. Use of Funds

### January 2009 - Nov. 2009

#### Overview

The Church Council and the Board of Stewards are sharing with you this financial snapshot of our congregation. It shows our income and expenses through the end of November, as compared to our 2008 fiscal year.

#### Income and Expenses

Contributions to the church are following a typical pattern this year. During the month of December we usually receive 15% of our pledges as people catch up or make an annual contribution. Please remember to complete your pledge for 2009 if you have not done so already.

The report shows only \$2820 of fundraising against a budget goal of \$8000. Many of our fundraisers ended up being processed as restricted/special offerings. We've received a total of \$14,133.07 from fundraising by boards and committees of the church. Here is a breakdown of our fundraising efforts beyond our normal Mission special offerings and the Mission trips:

CE Bible Sale	148.53
Mission	1490.75
MICAH	145.84
Stewards 50/500 and August Appeal	6619.95
50/500 for Elevator	2250
50/500 for Pathfinders	175
50/500 for Equality Wisconsin	2056
Chorale (Spring only)	1247

Additionally, we've received several grants to support our mission work. Andrew worked with Equality Wisconsin to receive \$10,000 from the Carpenter Foundation. He also wrote several grants in order to receive \$6,750 for our work with Pathfinders. These grants appear in the restricted/special offerings section of the report.

During the month of December our congregation catches up on its own pledges. You will notice that we have not yet paid many of our mission commitments. We will pay these as our final pledges come in to the congregation.

Please note that the staff salary lines include *all costs* of those positions: salary, health, annuity, and FICA (in the case of the pastors).

As mentioned in previous updates, the only section of the budget that will go significantly over-budget is the building/operations expenses. This was caused by a major reconstruction of the East Tower (\$58,258). The deterioration of the tower presented a safety issue. The Stewards originally expected the project to last over two years (2009 and 2010 budgets). The 2010 budget will reflect a decrease in the Stewards budget to cover the overage this year.

The building/operations expenses are also higher because of our utilities. We are working to increase the efficiency of our heating system. Heating system problems last winter and spring, combined with a colder than usual winter, led to higher energy costs.

Additionally, the higher spending on the boiler loan was matched by higher than expected rebates for the boiler loan project.

<b>Budget vs. Actual</b>	<b>Yr. 2008 Actual</b>	<b>Yr. 2009 Budget</b>	<b>2009 Year to Date</b>
<b>Income</b>			
Children's Offering	\$488.67	\$500	\$627
Fundraising	\$2892	\$8000	\$2820
Plate	\$5541.08	\$6000	\$4626
Pledges	\$293789.07	\$299870	\$288834
Building Use	\$83006.08	\$93800	\$73747
Investment Income	\$46384	\$28500	\$25504
Miscellaneous	\$8	\$3053	\$13331
Restricted/Special Offerings			\$17054
<b>Total Income</b>	<b>\$432108.9</b>	<b>\$439723</b>	<b>\$426543</b>
<b>Expenses</b>			
Assistance	\$200		
Childrens Offering	\$500	\$500	\$0
Eastside Services	\$1000	\$1000	\$0
OCWM	\$40000	\$25000	\$0
Quilters	\$102	\$150	\$88
MICAH	\$1239	\$1000	\$1200
Univ. Christian Ministries	\$800	\$1000	\$0
Campus Outreach	\$399	\$500	\$365
Seminarians/CUE	\$150	\$400	\$400
Elsner	\$1372	\$500	\$0
World Mission	\$1000	\$1000	\$1067
Other		\$4000	\$1087
<b>Total Mission</b>	<b>\$46761</b>	<b>\$35050</b>	<b>\$4207</b>
Deacons	\$8208	\$6500	\$3498
Christian Education	\$4401	\$4500	\$2817
Stewards	\$389	\$300	\$0
Boiler Loan	850	\$17400	\$23432
Miscellaneous Exp			\$962
<b>Total Expenses</b>	<b>\$426780</b>	<b>\$436106</b>	<b>\$409058</b>
<b>Operating Gain/Loss</b>	<b>\$5328</b>	<b>\$3617</b>	<b>\$17485</b>

Cultural Activities	\$4183	\$2000	\$1615
Refrienders	\$232	\$292	\$43
E. Association Dues	\$1460	\$1500	\$1337
New Initiatives	\$6458		\$0
Other	\$250	\$4376	\$671
<b>Total Program</b>	<b>\$27811</b>	<b>\$20968</b>	<b>\$11304</b>
Senior Minister	\$68991	\$69632	\$65321
Associate Minister	\$59286	\$59317	\$55310
Director of Music	\$17820	\$15757	\$14759
Organist	\$13788	\$13762	\$12530
Office Coordinator	\$45302	\$46214	\$43402
Cribbery	\$2450	\$3000	\$2475
Custodian	\$4213	\$9360	\$9324
CA	\$5461	\$5961	\$5366
Conference Health	\$4935	\$4935	\$5944
Youth Intern	\$2436	\$2600	\$1634
Staff Development	\$100	\$500	\$0
<b>Total Staff</b>	<b>\$224782</b>	<b>\$231037</b>	<b>\$216065</b>
Cleaning and Care	\$20678	\$11500	\$10689
Insurance	\$10356	\$11000	\$15851
City of Milwaukee	\$609	\$750	\$605
Office and Administration	\$14267	\$14200	\$14429
Building Repairs	\$49451	\$64000	\$97798
Organ/Piano Maintenance	\$1222	\$1200	\$698
Utilities	\$29994	\$29000	\$34790
<b>Total Building/Operations</b>	<b>\$126576</b>	<b>\$131650</b>	<b>\$174861</b>
Boiler Loan	850	\$17400	\$23432
Miscellaneous Exp			\$962
<b>Total Expenses</b>	<b>\$426780</b>	<b>\$436106</b>	<b>\$409058</b>
Operating Gain/Loss	\$5328	\$3617	\$17485

## ***Christmas Decorations and Poinsettia Honoria:***

### ***The poinsettias come with the following wishes:***

from Jan Veldboom in honor of her children and grandchildren.  
from Jay Edmundson and Andrew Warner, in honor of  
Mr. and Mrs. James Edmundson.  
from Angel Arroyo in memory of Rev. Miguel A. Arroyo y Colo  
from John Weise in memory of Hildegarde Weise  
from T. Todd Masman, in memory of Rev. John "J.T." Tucker  
from Helen and Dan Jonas in honor of their grandchildren  
from Jim Swenson in memory of Norbie and Esther Littel, Bebe  
Schoff; Shirley and Martha Swenson, and Josh Pratt.  
from Emily and Roger Brooks in memory of Emily's sister, Dorc  
Robinson Schinske.  
from the Jorn family, in memory of Peter Seymour and  
Esther and Luther Jorn.

### ***Gifts for the Decorations came from:***

from Alex and Barbara Hill in honor of their Plymouth friends;  
from John Heywood and Gretchen Miller, in memory of Joan He  
Daniel Miller;  
and also two envelopes for decorations came in unmarked.  
Thank You All.

We would also like to thank everyone who helped with all the de  
including the children of the church school who created their own  
a crèche in the window box going up to the second level. Check i  
very creative!

## *Christmas Eve Services*

**4 pm Childrens  
Christmas Pageant**  
—featuring the  
children of our church  
school as the Angels,  
the animals, the  
shepherds, the Wise  
People and Towns  
people, and the  
Holy Family.

*All are encouraged  
to bring gifts  
for the Offering!*

-Food will go to  
Frieden's Food Pantry

-Baby items will go to La  
Causa Crisis Nursery

-Hats, Scarves, &  
Mittens will go to  
Cathedral Center  
Shelter or to Guest  
House Men's Program

-Men's socks &  
underwear will go to the Guest House Men's Program

-Cash donations will go to the Eisenhower Center.



### **11 pm Candlelight Christmas Vigil Service**

Welcome the birth of our Lord in this peaceful and beautiful  
service, featuring Plymouth Choirs and musicians.



1.3. My — soul pro-claims your great-ness, O G  
 2. You have cast the might-y down from their throne



and my spir - it re - joic - es in you, You ha  
 and up - lift - ed the huym - ble of heart, You ha



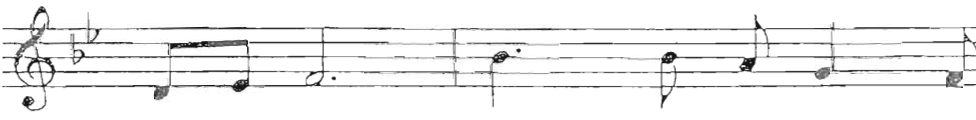
looked with love on your ser - vant here, and  
 filled the hun - gry with won - drous things, and



blessed me all my life through. Great and might-y  
 left the wealth-y no part. Great and might-y



you, O Ho - ly One, strong is your kind - ness  
 you, O Faith - ful One, strong is your jus - tice,



ev - er - more. How you fa - vor the  
 strong your love, As you prom - ised to



weak — and low - ly one, hum - bling the proud of heart.  
 Sar - ah and A - bra - ham, kind - ness for - ev - er - more.